



A COMPLETE RANGE OF SOLUTIONS FOR VEHICLE DYNAMICS TESTING



MOUNTING UNITS

FLEXIBLE MOUNTING UNITS

for

CORRSYS-DATRON Testing Equipment

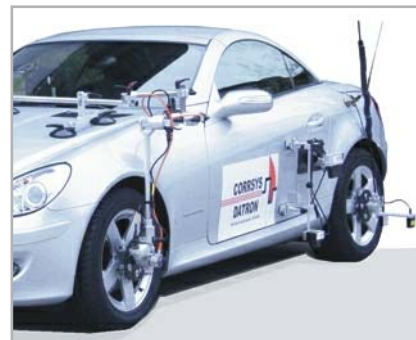
CORRSYS-DATRON Mounting Units enable quick and easy mounting of sensors and accessories to virtually any vehicle, including passenger cars, trucks, busses, and motorcycles.

Highly flexible and readily adjusted, this modular mounting system makes test set-up fast and easy.

CONTENT

Mounting Units for:

- **LFII-P Sensor** page 4
- **SFII-P Sensor** page 4
- **L-350 Aqua Sensor** page 5/6
- **S-350 Sensor** page 5/6
- **Wheel-Mounting S-Sensors** page 7
- **HF-xxxC Sensors** page 8
- **DCA System** page 9
- **RV-4 Sensor** page 10
- **WPT Sensor** page 11
- **Laptop Car Mounting** page 12
- **MSW Adapter Universal V3** page 13
- **Adjustable Mounting System** page 14



LFII-P / SFII-P Sensor

CORRSYS-DATRON 3-Point Suction Holder

Art.no. 16049 *



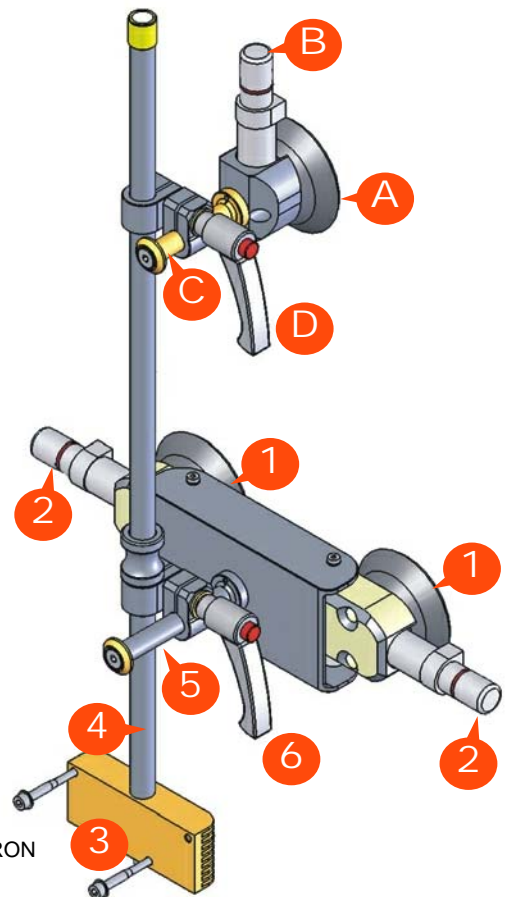
Stabilizing Element of the Suction Holder Unit

- A = Suction Pad
- B = Pumping Piston
- C = Stabilizer Rod
- D = Locking Lever

Suction Holder Unit

- 1 = Suction Pads
- 2 = Pumping Pistons
- 3 = Sensor Mounting Plate
- 4 = Mounting Rod
- 5 = Stabilizer Rod
- 6 = Locking Lever

* also applicable for CORRSYS-DATRON HF-xxxC Sensors - see page 8



CORRSYS-DATRON 8-Point Magnetic Plate Holder

Art.no. 14091

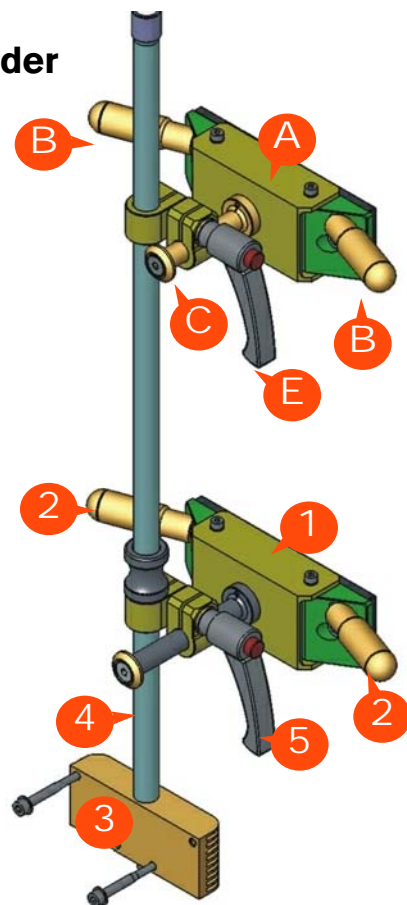


Stabilizing Element of the Magnetic Plate Holder

- A = Magnet
- B = Magnet Release Device
- C = Stabilizer Rod
- D = Locking Lever

Magnetic Plate Holder

- 1 = Magnet
- 2 = Magnet Release Device
- 3 = Sensor Mounting Plate
- 4 = Mounting Rod
- 5 = Locking Levers



Complete mounting instructions for the 3-point suction holder and the 8-point magnetic plate holder available in the sensor user manual:

http://www.corrsys-datron.com/Support/Manuals/a_Sensors/cds-m_LFII-P_e.pdf

http://www.corrsys-datron.com/Support/Manuals/a_Sensors/cds-m_SFII-P_e.pdf

L-350 Aqua Sensor / S-350 Sensor

CORRSYS-DATRON 3-Point Suction Holder

Art.no. 15408 (suction holder) and 15577 (extension with mounting plates)



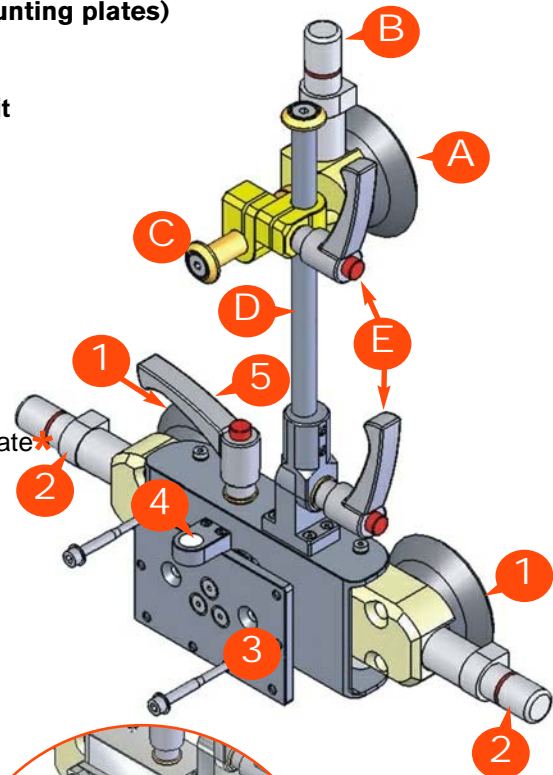
Stabilizing Element of the Suction Holder Unit

- A = Suction Pad
- B = Pumping Piston
- C = Stabilizer Rod 1
- D = Stabilizer Rod 2
- E = Locking Levers

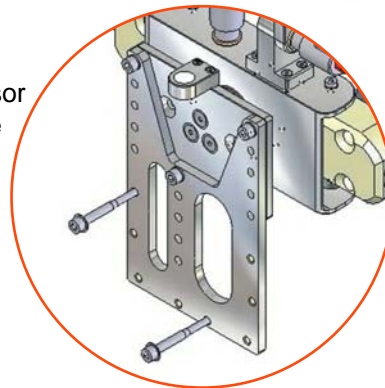
Suction Holder Unit

- 1 = Suction Pads
- 2 = Pumping Pistons
- 3 = Sensor Mounting Plate*
- 4 = Level Indicator
- 5 = Locking Lever

Art.no. 15408



* optional:
extended Sensor
Mounting Plate
Art.no. 16048



You can install the suction holder for L-350 Aqua / S-350 either horizontal or vertical.

Liquid level
indicator

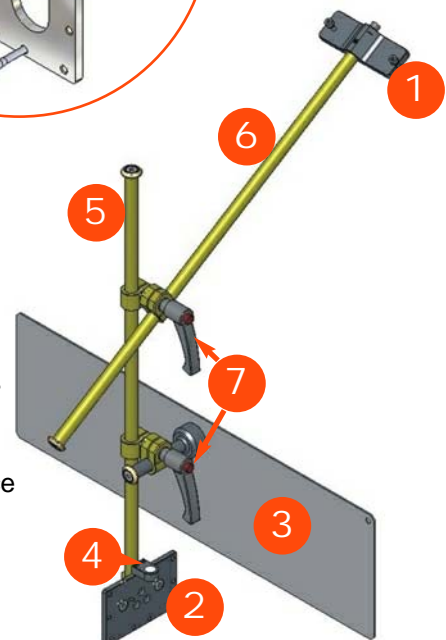


For easy adjustment of the sensor, the top of the mounting plate is fitted with a liquid level indicator.

Extension with Mounting Plates

- 1 = Mounting Plate 1
- 2 = Mounting Plate 2
- 3 = License Plate Mounting Device
- 4 = Level Indicator
- 5 = Rod 1
- 6 = Rod 2
- 7 = Locking Lever

Art.no. 15577



Complete mounting instructions for the 3-point suction holder available in the sensor user manual:

http://www.corrsys-datron.com/Support/Manuals/a_Sensors/cds-m_L350_e.pdf

http://www.corrsys-datron.com/Support/Manuals/a_Sensors/cds-m_S350_e.pdf

L-350 Aqua Sensor / S-350 Sensor

CORRSYS-DATRON 6-Point Magnetic Plate Holder

Art.no. 15213

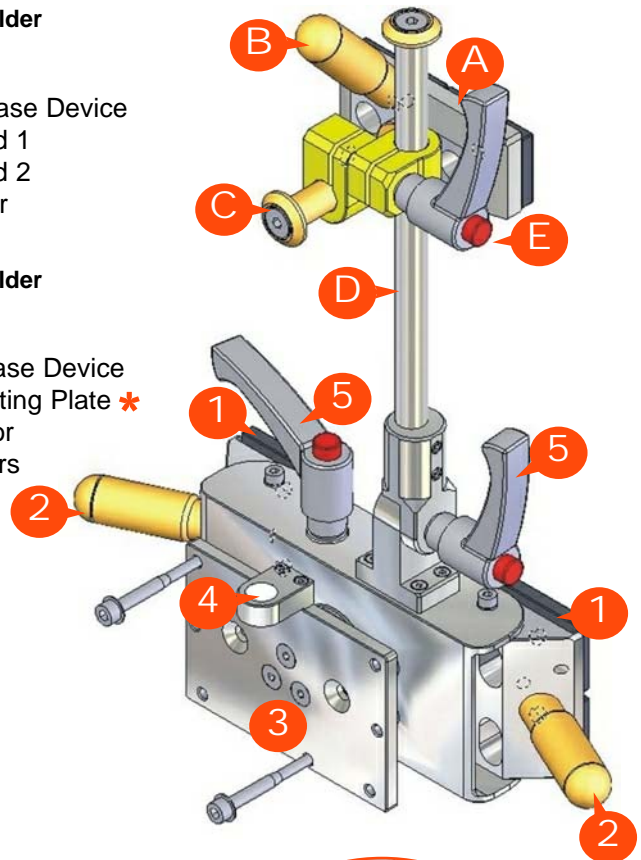


Stabilizing Element of the Magnetic Plate Holder

- A = Magnet
- B = Magnet Release Device
- C = Stabilizer Rod 1
- D = Stabilizer Rod 2
- E = Locking Lever

Magnetic Plate Holder

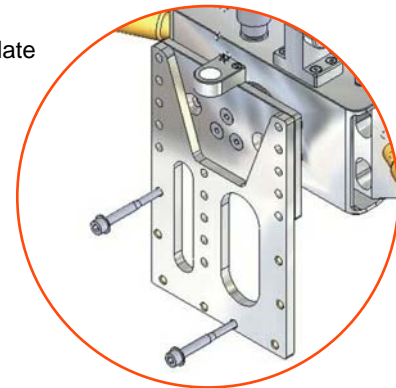
- 1 = Magnet
- 2 = Magnet Release Device
- 3 = Sensor Mounting Plate *
- 4 = Level Indicator
- 5 = Locking Levers



You can install the magnetic plate holder for L-350 Aqua / S-350 either horizontal or vertical.



* optional:
extended Sensor Mounting Plate
Art.no. 16048



liquid level indicator

For easy adjustment of the sensor, the top of the mounting plate is fitted with a liquid level indicator.

Complete mounting instructions for the 6-point magnetic holder available in the sensor user manual:

http://www.corrsys-datron.com/Support/Manuals/a_Sensors/cds-m_L350_e.pdf

http://www.corrsys-datron.com/Support/Manuals/a_Sensors/cds-m_S350_e.pdf

Wheel Mounting Unit for S-Sensors

CORRSYS-DATRON Wheel Mount System for CORREVIT® SF Sensors

Art.no. 14178



The CORRSYS-DATRON Wheel Mount System for CORREVIT® SF Sensors is designed to enable precision tire-slip measurement.

The following mounting units are recommended.

- Sensor Wheel Mounting Unit (**Art. No. 14178**) consisting of:
 - (1) Torsion rod with protective boot
 - (1) Suction holder
 - (1) Torsion rod mounting clamp
 - (1) Mounting disk with mounting hub
 - (6) Centering stars (1 each for 3-, 4- and 5-lug hubs)
(Art. No 11295, 11293, 11294)
- Mounting collets for various lug nut sizes:
 - Standard dimensions:
 - 17 mm, #10070
 - 19 mm, #10071
 - 21 mm, #10072
 - further on request



- 1 = Torsion rod with protective boot
- 2 = Suction holder



- 3 = Torsion rod mounting clamp
- 4 = Mounting disk with mounting hub



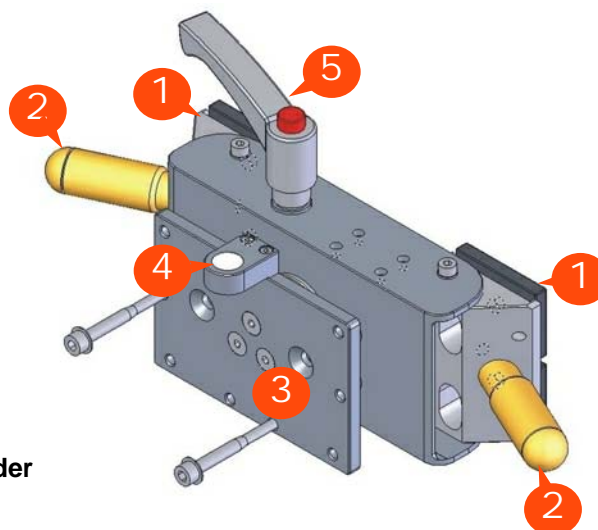
- 5 = 5-lug centering star

Complete mounting instructions for the 6-point magnetic holder available in the sensor user manual:
http://www.corrsys-datron.com/Support/Manuals/a_Sensors/cds-m_SFII-P_e.pdf

HF-250C / HF-500C Sensor / HF-750C Sensor

CORRSYS-DATRON 4-Point Magnetic Plate Holder

Art.no. 15694



Magnetic Plate Holder

- 1 = Magnets
- 2 = Magnet Release Device
- 3 = Sensor Mounting Plate
- 4 = Level Indicator
- 5 = Locking Lever

You can install the magnetic plate holder for the HF-xxxC Sensors either horizontal or vertical



liquid level indicator

For easy adjustment of the sensor, the top of the mounting plate is fitted with a liquid level indicator.

Complete mounting instructions for the 4-point magnetic holder available in the sensor user manual:
http://www.corrsys-datron.com/Support/Manuals/a_Sensors/cds-m_HF-x%20C_e.pdf

DCA Sensor System

DCA Mounting Hardware

Art.no. 14582 Wheel mounting unit for RV4 (car) and DCA (without collets)

Art.no. 14621 Mounting bracket for DCA system, without sensors



A properly mounted DCA System with two HF-xxxC Sensors



Mounting disk



For measurement of tire slip angle, the DCA System can be fitted with an optional CORREVIT® SFII-P Sensor.



Not included in the standard scope of delivery, please order individually:

- A. Mounting collet clamps
- B. Mounting collet barrels
- C. Retainer screws with washers



Securing the SFII-P Sensor to the mounting plate for SF Sensors on DCA mounting bracket.



For easy adjustment of the sensor, the top of the mounting plate is fitted with a liquid level indicator.

Complete mounting instructions for the DCA Mounting Hardware available in the sensor user manual:

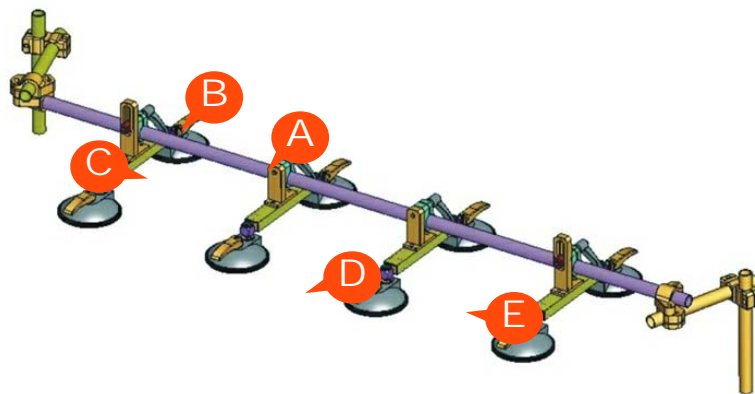
http://www.corrsys-datron.com/Support/Manuals/a_Sensors/cds-m_DCA_e.pdf

RV-4 Wheel Vector Sensor

Suction Mount System for safe, secure mounting on the vehicle hood.

Art. no. 14731: 8-Point Suction Mount (for 2 RV-4) - Weight: 9.3 kg

Art. no. 14732: 4-Point Suction Mount (for 1 RV-4) - Weight: 5.7 kg



- A. = Stable, rigid mounting bar
- B. = Stable aluminum clamps with locking levers
- C. = Slotted hole for adaptation to different hood curvatures
- D. = Suction mount offers approximately 90° of lateral motion relative to the mounting bar
- E. = Ball joint enables fast, accurate positioning of the suction mountings; splash-proof for all testing conditions

Wheel mount units

for use of the RV-4 in combination with additional sensors



Wheel Mount SL

For additional measurement of longitudinal and transversal speed and/or sideslip angle at the wheel.

Article no.: 14906



Wheel Mount SFII-P

For additional measurement of longitudinal and transversal speed and/or sideslip angle at the wheel.

Article no.: 14905



Wheel Mount HF-xxxC

For additional measurement of the dynamic tire flattening at the wheel.

Article no.: 14905



Wheel Mount WPT

For additional measurement of the wheel revolution with high time and angle resolution.

Article no.: 15103

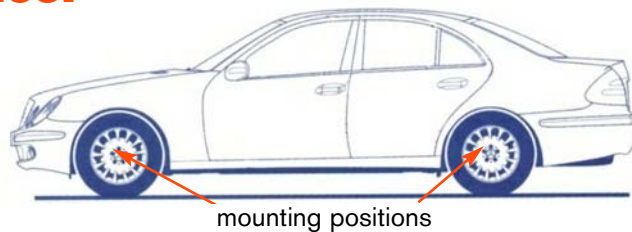
Complete mounting instructions for the RV-4 suction mount system available in the sensor user manual:

http://www.corrsys-datron.com/Support/Manuals/a_Sensors/cds-m_RV-4_e.pdf

WPT Wheel Pulse Transducer

WPT Mounting Hardware

Art.no. 11968



The Wheel Pulse Transducer mounts to the wheel lug nuts via adjustable mounting collets. The torsional protection rod (which maintains rotation around the wheel axis) is affixed to the vehicle body with suction or magnetic holders.



- Mounting disk: Fits 3-, 4- and 5-lug rims
- Mounting collets: Standard: 17 mm (Art.no. 10070) *
19 mm (Art.no. 10071) *
21 mm (Art.no. 10072) *
(other sizes available upon request)
- Centering stars: 5-lug (Art.no. 11296) *
4-lug (Art.no. 11297) *
3-lug (Art.no. 11298) *
- Torsional mounting: Joints, guide rod, suction or magnetic holder, gaiter seals

* Not included in the standard scope of Delivery.
Please order individually.



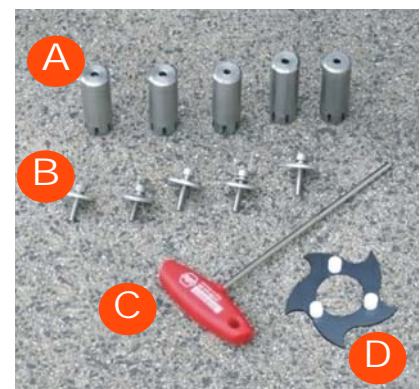
Torsion mounting assembly with magnetic holder



Mounting disk



1. Transducer with mounting plate
2. Transducer mounting bolt
3. Suction mount
4. Torsion mounting assembly
5. Extension rod



Optional*:

- A. Mounting Collets
- B. Retainer screws with washers
- C. Nut driver, hexagon
- D. Centering Star(s)
- E. Suction cup for fixing the safety line, Art.no. 10029

Complete mounting instructions for the WPT mounting hardware available in the sensor user manual:

http://www.corrsys-datron.com/Support/Manuals/a_Sensors/cds-m_WPT_e.pdf

Laptop Car Mounting

**Vehicle mounting kit for standard laptops
for Measurement using Turbolab Pro or CeCalWin Pro Software and
CORRSYS-DATRON Sensors by serial link**

Art.no. :

Laptop Car Mounting with Triggerbox 14543

Laptop Car Mounting without Triggerbox 14539



- Easy to mount
- Placed on co-driver's side
- Clamping base and seat rail mounting base
- Fit into almost all vehicles
- Secures laptop and screen
- Adjustable laptop position for optimal viewing angle
- Quick fasteners to adjust conveniently
- Adapts to usual laptop sizes (max width 370mm)
- Safety device for solid locking of the Laptop
- Rubber dampers protect harddisk by reducing vibration level
- Including triggerbox and mini 12V distribution *
- Auxiliary 12V socket for laptop's power supply *
- Laptop's power supply stored safely underneath laptop
- Solid lightweight aluminum structure
- Powder coated



**No co-driver permitted!
Recommended to disarm airbag
on co-driver side**

* only with Art. no. 14543 (Laptop Car Mounting with Triggerbox)

Complete mounting instructions for the Laptop Car Mounting unit available in the data sheet:
http://www.corrsys-datron.com/Support/Data_Sheets/Datasheets-Access/cds-d_Laptop-H_e.pdf

MSW Adapter Universal V3

CORRSYS-DATRON Steering Wheel Adapter Universal V3

Art.no. : 16188



The new MSW Universal Adapter is designed to enable mounting of the CORRSYS-DATRON Measurement Steering Wheel (MSW) without the use of custom-fabricated steering shaft adapters.

The Universal Adapter is simply clamped onto the steering wheel of the test vehicle, which is possible due to the compact dimensions of the CORRSYS-DATRON MSW.



Extent of Delivery

1 supporting plate, designed for

- passenger cars with steering wheel \varnothing 280 ... 420 mm or
- trucks with steering wheel \varnothing 400 ... 560 mm

1 adapter flange

3 adjusting angles with adaptation mechanism and knurled screw

3 clamp collars with foam rubber inlay

3 threaded studs for application on steering-wheel rim N4

6 V2A hexagon screws, M6 x 45 mm

8 V2A hexagon screws, M6 x 16 mm

8 V2A washers, 6.4 mm

6 hexagon socket countersunk screws M8 x 20 mm

3 V2A hex nuts M8

3 V2A washers, 8.5 mm

6 V2A ULS screws M6 x 16

6 V2A washers 6.4 mm, big

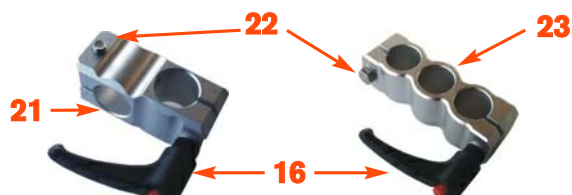
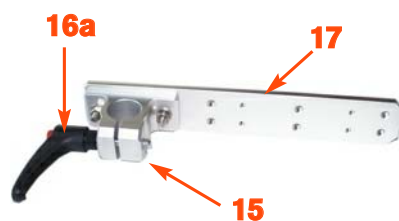
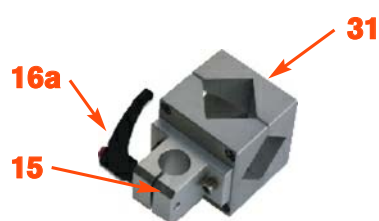
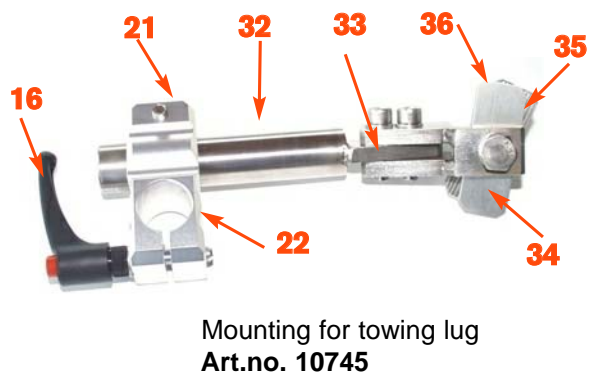
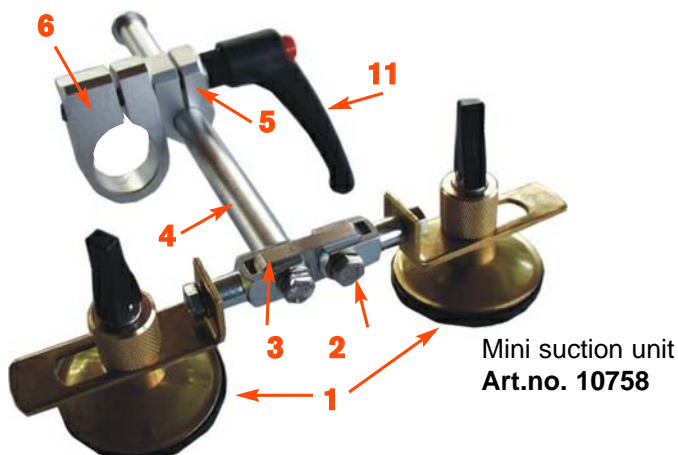


Complete mounting instructions for MSW Adapter Universal V3 available in the data sheet:
http://www.corrsys-datron.com/Support/Data_Sheets/Datasheets-Sensors/cds-d_MSW-Adapter_e.pdf

Adjustable Mounting System

Components

Art.no. : **Details next page**



Adjustable Mounting System

Component Part Numbers

| Position | Description | Article Number |
|------------|---|----------------|
| 1 – 7, +11 | Mini suction unit | .10758 |
| 1 | Suction holder Ø55 | .12691 |
| 2 | Handle bar bracket | .10121 |
| 3 | Clip | .10048 |
| 4 | Bar Ø12 L = 170 | .10074 |
| 5 | Clamp Ø12 | .13977 |
| 6 | Clamping block 2 Ø25 | .14001 |
| 11 | Clamping lever M6 x 65 | .14213 |
| 8 - 11 | Suction holder unit | .10759 |
| 8 | Suction holder Ø120 | .10030 |
| 9 | Block | .10047 |
| 10 | Clamping block | .13835 |
| 11 | Clamping lever M8 x 55 with screw | .14213 |
| 12 | Spare suction cups Ø55 | .10065 |
| 13 | Spare suction cups Ø120 (2 pieces) | .10064 |
| 14 | Safety line | .10747 |
| 15 | Flange clamp Ø25 | .13834 |
| 16 | Clamping lever M8 x 40 with screw | .10826 |
| 16a | Clamping lever M8 x 35 with screw | .10827 |
| 17 | Fastening strip | .11742 |
| 18 | Clamp Ø25 | .10042 |
| 19 | Screw M6 x 40 | .10201 |
| 20 | Clip clamp Ø25 | .13903 |
| 21 | Cross clamp Ø25 | .13823 |
| 22 | Screw M8 x 40 | .10204 |
| 23 | Parallel clamp Ø25 | .13999 |
| 24 | Tube Ø25 L = 600, including end plug | .10757 |
| 25 | Tube Ø25 L = 500, including end plug | .10756 |
| 26 | Tube Ø25 L = 250, including end plug | .10755 |
| 27 | Tube Ø25 L = 150, including end plug | .10754 |
| 28 | End plug | .10076 |
| 29 | Socket Ø25 M8 | .10821 |
| 30 | Knurled screw M8 x 20 | .10219 |
| 31 | Prisms holder | .10753 |
| 32 | Joint part 1.1 (max. extension length 180 mm) | .10033 |
| 32b | Joint part 1.2 (length available as required) | .11450 |
| 33 | Joint part 2 | .10034 |
| 34 | Clamp 2 M10 | .10046 |
| 35 | Clamp 1 | .10045 |
| 36 | Screw M10 x 50 | .10195 |
| | Suction cup | .10029 |

CORRSYS-DATRON Mounting Units

CORRSYS-DATRON Headquarters

International Headquarters

CORRSYS-DATRON GmbH

P.O. Box 1349

Charlotte-Bamberg-Str. 12

D-35578 Wetzlar

GERMANY

Phone: +49-6441-9282-0

Fax: +49-6441-9282-17

E-Mail: info@corrsys-datron.com

North American Headquarters

CORRSYS-DATRON Sensorsystems, Inc.

40000 Grand River

Suite 503

Novi, MI 48375, USA

Phone: 248-615-2035 / toll free: 1-800-832-0732

Fax: 248-615-2184

E-Mail: USA-sales@corrsys-datron.com

Chinese Headquarters

CORRSYS-DATRON Sensorysysteme GmbH, China Office

Room 610, Jin TianDi International Mansion

No. 998 RenMin Road, Shanghai (200021) P.R. China

Phone: 86-21-63114144

Fax: 86-21-63114154

E-Mail: Xiaoying.Li@corrsys-datron.com.cn



Worldwide Sales Partners & Agents:

www.corrsys-datron.com/locations.htm

© 2008 CORRSYS-DATRON Sensorysysteme GmbH, Wetzlar, Germany
D201-51-03-02E 08/08

In a continuous effort to improve our products,
CORRSYS-DATRON reserves the right to change
specifications without prior notice.

www.corrsys-datron.com